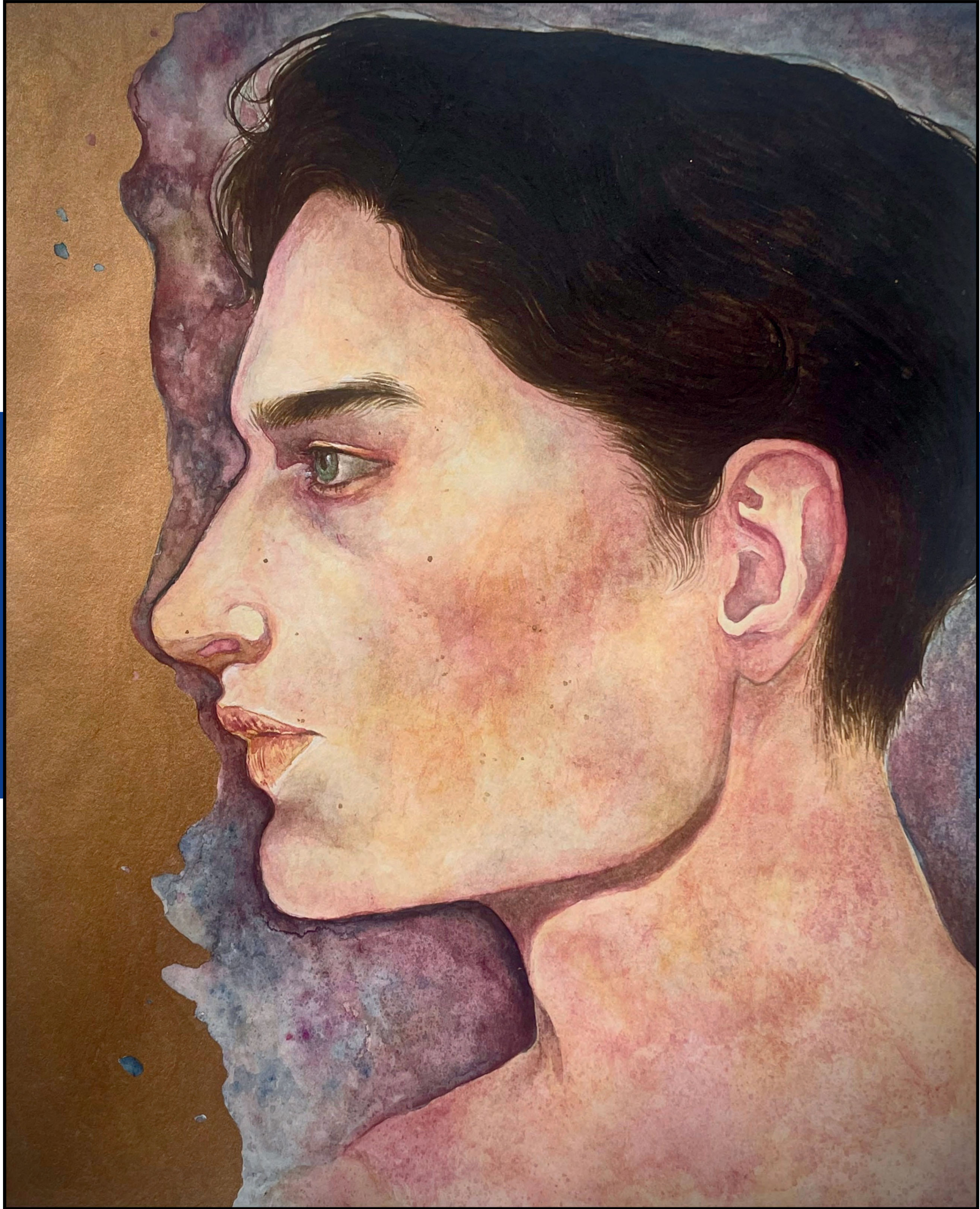


BRIGHT SIDE



SOFIA

(she/her)

In the past few years, I've struggled with depression and overthinking how others feel about me. It's always left me stuck in a shadow of my own judgement of myself, but I've stopped caring so much about how others perceive me and I've started seeing the brighter side of things.

The dark spreading colors of the shadow behind the subject represents the lingering self doubt that's trying to take over. But the subject is looking out into the bright side of the painting, the gold, that represents self acceptance and a more positive outlook on life.

