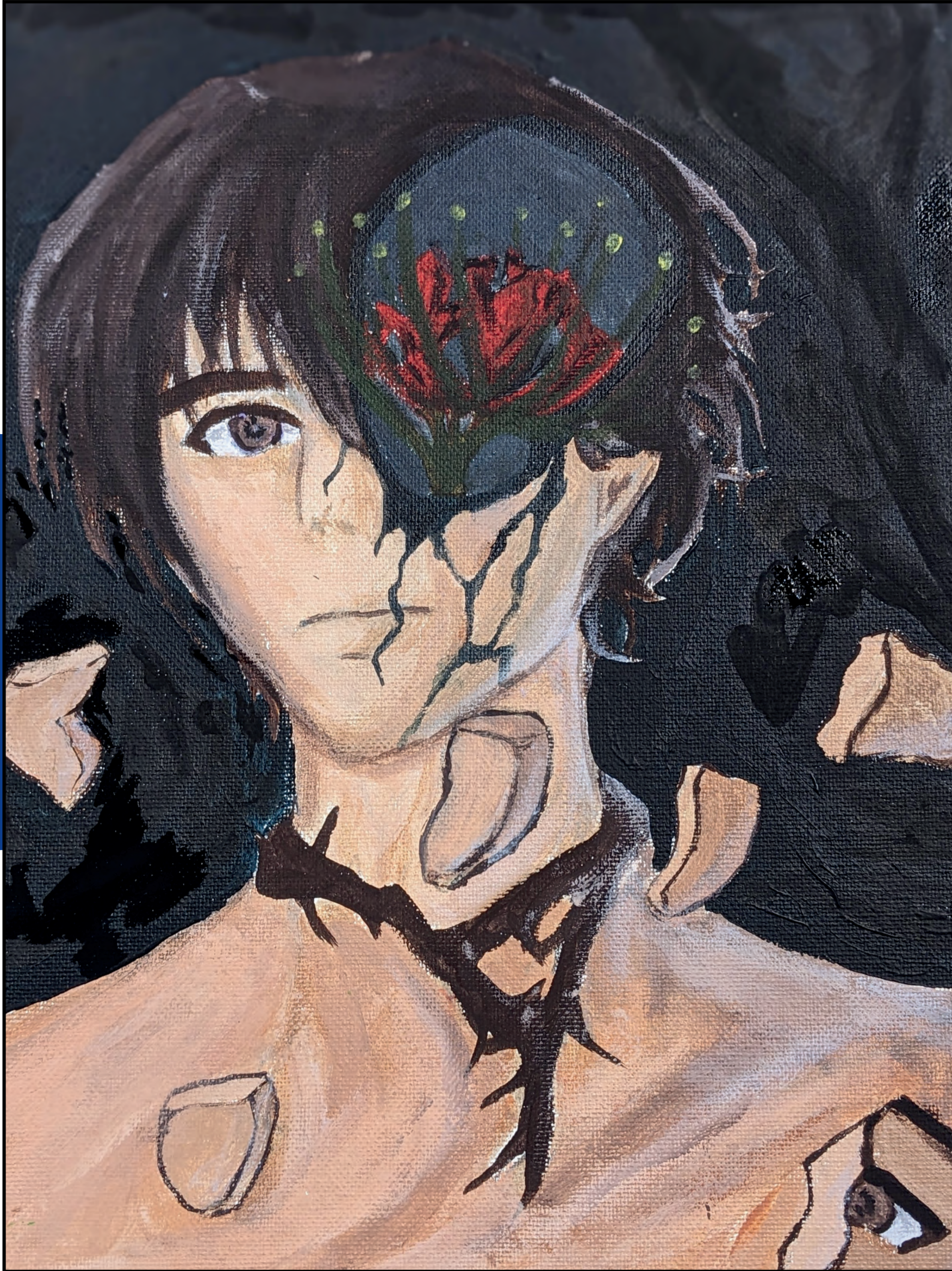


THE LAST PIECE



KACI

My motivation to participate in the Magnify Voices Expressive Art is that I know everyone struggles. Mental health is a serious topic. I like the idea that someone can view my painting and relate to it in their own way.

The meaning behind my painting is symbolic of the head. There are broken pieces around the paintings. These pieces symbolize pent-up emotions, these emotions can break. Especially if you do not express your emotions or feelings. For example, the broken eye is a symbol of your emotion being blocked. The last symbol is the head with a red spider means death..

